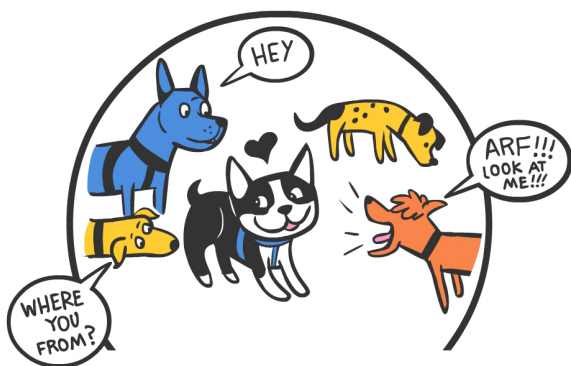


Does My Dog Love Other Dogs?

Just like people, dogs have different levels of tolerance for other dogs.

As a dog matures, he or she will often quite naturally become less social and tolerant. There are many developmental changes that happen between sexual and social maturity, and most dogs will continue to display these changes until two to three years of age. Proper facilitation of dog-dog introductions and friendships can change your dog's sociability for the better over time, and bad experiences can quickly make things worse. Good leadership and direction is important to set your dog up for success with their species.



DOG SOCIAL

I generally LOVE all dogs, even the ones who get in my face and do rude, annoying stuff. I am either a PUPPY or a VERY SOCIAL ADULT.

***Most puppies start here**



DOG TOLERANT

I get along with most dogs. I am generally tolerant of rude behavior, and stay pretty calm on leash. I'm cool and relaxed, and have good communication skills.



DOG SELECTIVE

I have dog friends but am picky about new dogs. Seeing unfamiliar dogs when I am on leash is really stressful. I don't cope well with some types of dogs or styles of interaction. I need human supervision, positive guidance, and proper introductions.



DOG AGGRESSIVE

NOPE. Not into other dogs. If I have to select 1 or 2 dog friends, I am super sensitive around them too, and may act like a jerk when triggered. I need extra management and patience from my humans, whom I love more than dogs!

A dog's social tolerance changes over time and is flexible and manageable!

#respectfordogs

© 2017 Lili Chin | www.doggiedrawings.net/freeposters

Source: paws4udogs.wordpress.com/2017/02/16/understanding-dog-dog-sociability